



**THE LASH**  
SUPPLY.COM

# INTRO

The Lash Supply was founded by Dennis & JoJo Tran in 2018 - The premier eyelash manufacturer in Vietnam. At The Lash Supply, we are more than just a retail business - we are a community driven by our core values and shaped by our hard working history. Our culture is the heartbeat of our organization, guiding our actions, decisions, and interactions every day.

**2020**

Rebranded to "The Lash Supply" with 7 store locations in Texas

Rebrand to "The Lash Institute" enters the US market with it's 1st store in Cypress, TX

Flourished with 12 new stores in California, Florida, Nevada, and Texas

**2021**

Total 19 stores with 3 new stores in N.Carolina and Washington

**2023**

Opened 2 stores in Austin & Ft. Worth Texas with **21 total locations**

**2024**

DENNIS  
♥ Jojo

## WHY US?

As we continue to grow and evolve until now more than 20 stores nationwide in the American market, we honor our heritage while embracing innovation and change. Our history is not just a reflection of where we've been, but a testament to who we are and where we're headed. Together, we are The Lash Supply – united by our values, inspired by our history, and committed to a brighter future.

**2019**

**2018**

*Dennis + Jojo Tram  
open their first lash  
factory and create  
"The Lash by Jamie"*

*Total 16 stores at new locations in  
Illinois, Pennsylvania, Georgia,  
Arizona & Virginia.*

*Launched e-commerce site  
"thelashsupply.com"*

**2022**

**GET TO KNOW US**



LASHES



 *Tip: For the fullest volume looks, use the Premium Volume Lashes for its stable curl & matte black finish!*



# LASHES



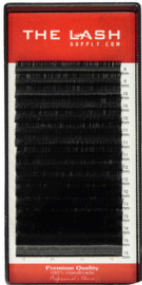
## VOLUME (PREMIUM)

- Cashmere/Mink
- Foil backed
- Matte black finish
- Volume lash looks
- Stable curl

available in

C/CC/D  
0.02/0.03/0.05/0.07  
8-20mm Single tray  
9-16mm **Mixed** tray

## CLASSIC LASH (STANDARD)

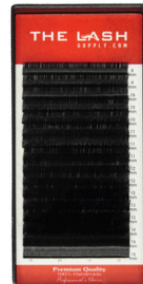


- Silk
- Flexible
- Lighter than synthetic lashes

available in

C/CC/D/J/L/LD/M/U  
0.10/0.15/0.20  
8-20mm Single tray

## VOLUME LASH (STANDARD)



- Silk
- Flexible
- Lighter than synthetic lashes

available in

C/CC/D/J/L/LD/M/U  
0.05/0.07  
8-20mm Single tray

## MAGIC LASH



- Easy fan
- Soft and natural look
- Includes glue base

available in

C/CC/D  
0.03/0.05  
8-20mm Single tray  
9-16mm **Mixed** tray

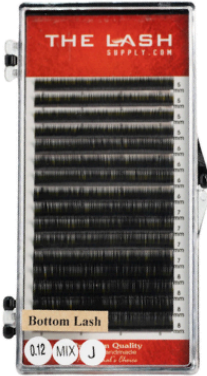
## FLAT LASH



- Groove shaped root
- Korean high-quality synthetic
- Cruelty-free

available in

C/D  
0.20  
11-20mm Single tray  
9-16mm **Mixed** tray



## BOTTOM LASH

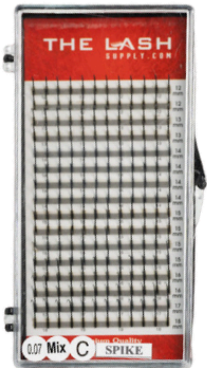
- Multiple uses
- Black with shine

\_\_\_\_\_ available in \_\_\_\_\_

J

0.12

5-8mm **Mixed** tray



## SPIKE LASH

- Multiple use
- 12 spikes per row
- Wispy and hybrid lash looks

\_\_\_\_\_ available in \_\_\_\_\_

C/D

0.07

10-18mm **Mixed** tray



## YY LASH

- Easy to pick up
- Double tipped
- Natural density
- Braided in mesh

\_\_\_\_\_ available in \_\_\_\_\_

C/D

0.07

9-16mm **Mixed** tray

# PREMADE



## SINGLE LENGTH MEGA VOLUME

- 500 handmade fans
- Matte black
- Slim base
- Lightweight

available in

C/D

20D

0.03

12-25mm Single tray



## MIXED LENGTH MEGA VOLUME

- 1,000 handmade fans
- Matte black
- Slim base
- Lightweight

available in

C/D

6D/7D/10D/20D

0.03/0.05/0.07

9-16mm **Mixed** tray



## PREMADE FANS (BULK)

- 1,000 handmade fans
- Matte black
- Slim base
- Lightweight

available in

C/CC/D/L

3D/5D/6D/7D/8D/10D/12D/14D/20D

0.03/0.05/0.07/0.10

8-20mm Single tray

✓ **DOUBLE QUANTITY**

✓ **BOLD & BLACK**

✓ **SAVES TIME**



## PREMADE - MEGABOX

- 500-600 fans
- Easy storage
- Quick application

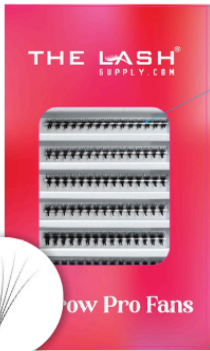
\_\_\_\_\_ available in \_\_\_\_\_

C/D

5D/7D/10D/12D/14D

0.03/0.05/0.07

10-16mm **Mixed** tray



## NARROW PRO FAN

- 500 fans
- Bolder and darker
- Pointy, narrow base

\_\_\_\_\_ available in \_\_\_\_\_

C/D

5D/7D/10D/12D/14D

0/03/0.05/0.07

10-16mm **Mixed** tray

**CURL**



**VOLUME**



5D

7D

10D

14D

20D

# COLOR



## COLOR LASH

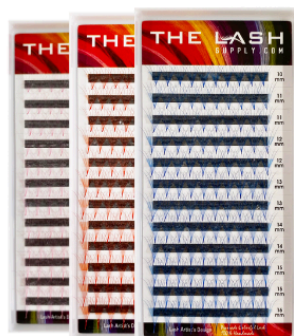
- Add flair to lash look
- Ombre, mixed, glitter, and solid colors
- 20+ color options

available in

CC

0.07

10-16mm **Mixed** tray



## PREMADE COLOR LASH

- 500 handmade fans
- Matte black
- 10+ color options
- Lightweight

available in

CC

6D

0.07

9-16mm **Mixed** tray



## PREMADE COLOR BULK

- 500 fans
- Slim base
- Lightweight
- 6+ color options

available in

CC

6D

0.07

9-18mm **Mixed** tray

# CLUSTER

THE LASH  
SUPPLY.COM



## KNOT-FREE LASH CLUSTERS

- Available for wholesale purchase
- Private label options
- Bulk set- 50 trays per box

available in

10D/14D/20D/24D

Size S/M/L/ XL



## DIY CLUSTERS

- Varying lengths from 10mm - 16mm
- 144 cluster pieces
- Knot-free, vegan, & cruelty-free

available in

*Natural Look*

*Volume Look*

*Hybrid Look*

*Mixed Style Look*



## DIY CLUSTER SET

- Easy to apply
- Includes 2 in 1 lash glue & sealant and tweezers
- 144 cluster pieces
- Knot-free, vegan, & cruelty-free

available in

*Natural Look*

*Volume Look*

*Mixed Style Look*



ACADEMY  
**LASH.COM**

# ONLINE & IN-PERSON TRAINING

## ADVANCED TRAINING KIT

*includes items below*



## BEGINNER TRAINING KIT

*includes items below*



**EDUCATORS:** Ask about custom training kits for trainings/ schools and unlock exclusive pricing.



**10% OFF**

ALL ONLINE  
LASH COURSES

*CREATING CLASSIC, HYBRID,  
WISPY, & VOLUME LASHES*

**CODE: ACADEMY**

- SMALL CLASS SIZES
- PAYMENT PLANS AVAILABLE
- POST-COURSE NETWORKING
- INDUSTRY RELEVANT TRAININGS
- TRAINING KIT INCLUDED

*MANNEQUIN, LASHES, TWEEZERS, ADHESIVE, PRACTICE LIDS & MORE*



**THE LASH LIFE**

 **TIPS & TRICKS**

[www.academylash.com](http://www.academylash.com)

GET STARTED WITH  
A FREE COURSE



# ADHESIVE

a.

b.

c.

- a. Flex 4.0 Glue
- b. Crystal Clear Glue
- c. Magic Glue
- d. Junior Glue
- e. Tornado Glue
- f. One Care Sensitive Glue



*Tip: To choose the best glue for each lash service, use a hygrometer to determine the humidity of your lashing space.*



# DISCOVER THE DIFFERENCE



**MAGIC  
ADHESIVE**

---

**STRONGER**

---

adhesive protects  
against all elements

---

**BETTER**

---

easily adapts to any  
environment

---

**LASTS  
LONGER**

---

lash retention up to 8 weeks

# ADHESIVES

5.1oz bottle

retention after 3 weeks



## TORNADO ♥

- 0.5-0.8 sec drying time
- < 8 week retention
- 30%-60% humidity working condition
- Master/Professional use



## FLEX 4.0 ♥

- 0.8-1 sec drying time
- < 7 week retention
- 25%-65% humidity working condition
- Professional use



## MAGIC ♥

- 1-1.5 sec drying time
- < 7 week retention
- 25%-65% humidity working condition
- Professional use



## JUNIOR ♥

- 2-3 sec drying time
- < 6 week retention
- 30%-70% humidity working condition
- Beginner use



## ONE CARE

- 2 sec drying time
- < 2 week retention
- 40%-70% humidity working condition
- Sensitive glue



## CRYSTAL

- 1-1.5 drying time
- < 6 week retention
- 30%-70% humidity working condition
- Clear color

PROTECTION AGAINST



OIL



WATER



FOUNDATION



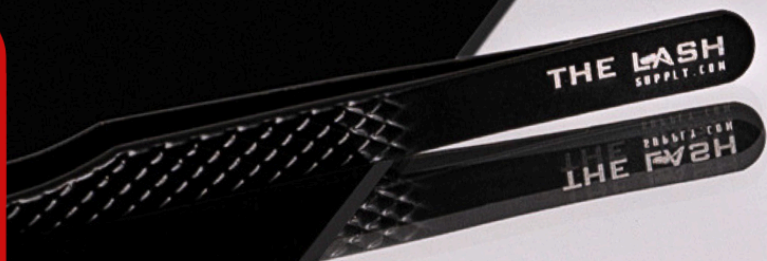
MASCARA

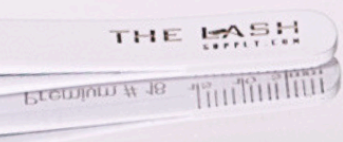
15 DAY SATISFACTION GUARANTEE



♥ denotes global adaptability for working conditions

# TWEEZERS





# TWEEZERS



## REGULAR



#1



#2



#3



#4



#5






#6



#8

## PREMIUM FIBER TIP

Available in these colors:   



#4



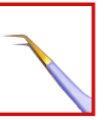
#3



#6



#8



#17



#20

## TOOLS



Mirror



Magnetic Case



Tweezer Holder

## FEATURED COLLECTION



Essential Heart Set



Black Premium Fiber Tip



#14



#15




#16




#17



 *Tip: Clean your tweezers by soaking them in glue remover.*

# ACCESSORIES



 *Tip: To reduce lash glue allergy and speed up your cure time, use a super bonder*



# LASH ACCESSORIES



MEDICAL TAPE



SILICONE LASH PAD



GLUE SHAKER



REG. GLUE RING



BLOSSOM GLUE RING



GEL EYE PAD



LIP BRUSH



MASACARA WAND



NANOMISTER



MIRROR



ACRYLIC LASH BOARD



RECHARGEABLE FAN

# SALON DECOR



GLAMCOR LIGHT



BED COVER



LASH NECK PILLOW



LASH BOARD STORAGE



GLUE STORAGE



STOOL



HYGROMETER + THERMOSTAT



INSULATED THERMOS



BARBICIDE JAR



WAX MACHINE



SATIN SMOOTH WAX



HEAD MAGNIFYING GLASSES

# LASH CARE



SUPER BONDER



LASH PRIMER



RAPID LASH SERUM



GLUE REMOVER FOR TWEEZERS



GEL REMOVER  
CREAM REMOVER



LASH SEALANT



LASH FOAM CLEANSER



LASH CONCENTRATE



EMPTY BOTTLES



LASH LIFT KIT



BROW LAMINATION



GODEFROY  
BROW/LASH TINT





*DO YOU OWN A SALON OR STORE?*

**BECOME AN  
AUTHORIZED RESELLER**

---



United States of America



Canada



Mexico



**GET IN TOUCH**

☎ 346-549-1999

✉ [info@thelashsupply.com](mailto:info@thelashsupply.com)

*Your Logo*

## WHOLESALE & PRIVATE LABELING

RELIABLE & CONSISTENT QUALITY

FLEXIBLE PAYMENT PROGRAM

Volume/Classic Lash (Silk/Red Label) .....	starting at \$4.70
Premium Volume Lash (Cashmere/Mink) .....	starting at \$6.50
Premade Fan (1000 Fans) .....	starting at \$12.50
Adhesive .....	starting at \$15.00
Regular Tweezers .....	starting at \$7.50
Fiber Tip Premium Tweezers .....	starting at \$14.50
Lash Foam Cleanser .....	starting at \$3.50

### REQUEST A FREE QUOTE

Tailored Solutions for Your Business Needs

Benefit from personalized assistance and tailored orders to meet your specific business requirements

☎ 346-549-1999

✉ [support@thelashsupply.com](mailto:support@thelashsupply.com)



# \$10 OFF

your total order

when you **shop online** at  
[www.thelashsupply.com](http://www.thelashsupply.com)



**code: hello10**


# 15% OFF

your total order

when you **shop in store** at a  
The Lash Supply location



## STAY CONNECTED

 **+1 888-388-4352**  
HOTLINE NUMBER

While supplies last. Limit one coupon per purchase on product/quantity specified. No more than two (2) identical coupons per household per day. Any other use constitutes fraud. No cash back or credit if coupon exceeds selling price. Online orders valid only in the United States and Canada. In-store orders valid at any The Lash Supply store location except for locations in FL, AZ, and CA. Coupon must be presented to cashier at time of checkout.

# FIND A STORE

## ARLINGTON, VA

6013 Wilson Blvd.  
Arlington, VA 22205

**703-843-3456**

## ARLINGTON, TX

3004 E Pioneer Pkwy. #200  
Arlington, TX 76010

**346-352-8888**

## AUSTIN, TX

9515 N Lamar Blvd.  
Austin, TX 78753

**512-762-2492**

## CHARLOTTE, NC

3501 S Tryon St. Suite F  
Charlotte, NC 28217

**980-401-1525**

## CHICAGO, IL

4853 N Broadway Ave.  
Chicago, IL 60640

**630-935-8808**

## DALLAS, TX

3112 M Jupiter Rd. Suite 312  
Garland, TX 75044

**832-938-7878**

## DAVIE, FL

6325 Stirling Rd.  
Davie, FL 33314

**786-668-8668**

## FORT WORTH, TX

6229 Oakmont Blvd.  
Fort Worth, TX 76132

**832-969-0745**

## HOUSTON, TX

10252 Almeda-Genoa Rd.  
Houston, TX 77075

**346-549-1999**

## HOUSTON, TX

10311 N Elridge Pkwy.  
Houston, TX 77065

**281-477-7810**

## HOUSTON, TX

11548 Bellaire Blvd. Suite C  
Houston, TX 77072

**614-484-4568**

## HUNTINGTON

## BEACH, CA

Coming Soon

## LAS VEGAS, NV

4592 Spring Mountain Rd.  
Las Vegas, NV 89102

**725-186-6913**

## NORCROSS, GA

619 Oakbrook Pkwy, Unit B,  
Norcross, GA 30093

**470-999-8999**

## PHILADELPHIA, PA

600 Washington Ave. Unit 15  
Philadelphia, PA 19147

**445-448-5368**

## PHOENIX, AZ

1749 W Main St. Suite 3  
Mesa, AZ 85202

**602-582-7234**

## SAN ANTONIO, TX

5227 Walzem Rd.  
San Antonio, TX 78218

**830-614-2349**

## SAN DIEGO, CA

7710 Balboa Ave. Suite 117  
Sand Diego, CA 92111

**858-886-8668**

## SEATTLE, WA

2445 4th Ave. S Suite 100  
Seattle, WA 98134

**206-290-8558**

## SPRING, TX

202 Sawdust Rd. Suite 117A  
Spring, TX 77380

**832-614-2349**

♥ *The Lash Salons location*

[www.thelashsupply.com](http://www.thelashsupply.com)



@thelashsupplyofficial

