

Scan Me



THE LASH[®]
SUPPLY.COM

**Choosing us means choosing the factory price
We don't cost a ton**



1-888-THELASH



www.thelashsupply.com

TIPS & TRICKS

TIP FOR EYELASH EXTENSION ADHESIVE

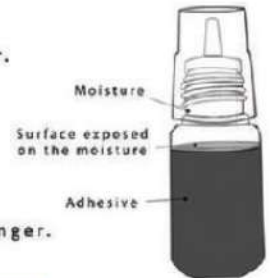
MSDS - Material Safety Data Sheet at www.thelashsupply.com

1. Type of eyelash extension adhesives

- There are two different types for eyelash extension adhesives.
- First one is for non-professional users, which is relatively easier to use with less irritating.
- It requires longer time to cure, and relatively milder.
- And there is rapid dry adhesive more for professional use.
- Rapid dry glue cures quickly and it could be stimulus compare to longer dry type.
- Glue with lower viscosity normally requires shorter curing time, so it is recommended for professional users.
- Glue with high viscosity cures slowly for non-professional users to use more easily.
- So it is important to pick a proper type regarding the user's skill level along with a customer's preference.

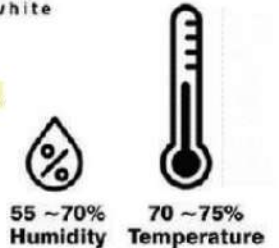
2. Curing process of eyelash extension adhesive.

- About 80-90% of eyelash extension adhesive is consist of cyanoacrylate.
- Cyanoacrylate starts curing process as soon as it gets exposed to moisture in the air.
- When it is sealed in a container surface exposed to moisture in the air is smaller, so the curing process slows down, but once it is exposed to air, curing process accelerates.
- Adhesive strength is getting diminished once the container is opened and exposed to air. It is recommended to be used as soon as possible after it is opened. Normally within a month after opening, and if it is not yet opened within six months.
- Also faster procedure to reduce the exposure time helps for extended lash to stay longer.



3. Optimal environment for extension procedure

- The most optimal environment for eyelash extension is between 25-28C degrees Celsius, and 45-55% of humidity level.
- If it too humid it accelerates the curing process to weaken the bonds, and may leave white glue stain afterwards.
- If humidity gets lower than optimal level, there would not be enough moisture for proper curing process, so it would take very long to fully dry to set properly.
- This is the same with temperature. High temperature makes the curing process faster, and lower temperature the other way around.
- For the most optimal extension procedure, it is recommend to equip thermometer, hygrometer, AC, dehumidifier for summer and humidifier for winter time.



4. Cautions:

Shake well before using black colored adhesive for Carbon Black colorant can be evenly mixed.

It is recommended to shake for one minute about 20-30 times side to side.

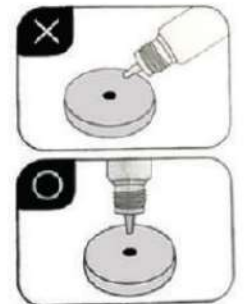
To shake up and down might cause to clog the nozzle, or air on the top of the container may get into adhesive.

Hold the container 90 degree to prevent from air getting into the container.

For better results, use the glue after discarding the first couple drops.

Do not add new drops to older ones on the tray.

Once the glue is on the tray, use from the middle since the outer surface has been already exposed to the air to start curing process. To use jade stone or plate is recommended to lengthen the curing process time.



5. Storing after the procedure.

Tilt the container about 45 degree for remaining adhesive on nozzle to fully settle into container, clean the nozzle, and make sure to seal the cap air tight.

Keep the container into aluminum zipper bag getting rid of any excess air from the bag with dehumidifying agent.

Keep the sealed aluminum bag upright in cool, dry, and dark place.

Do not keep in the refrigerator. Drastic temperature change may create excess moisture to damage the adhesive. If it is kept in the refrigerator, make sure to keep it in room temperature more than two hours before using. To note purchased date and first opened date also helps.

All products are sold only on the understanding that they are to be used for Professional Use Only, the purpose intended by a qualified and insured person of adult age. This means The Lash Supply will accept no responsibility if the products are incorrectly used and cause any kind of harm or damage. You also acknowledge to be such a knowledgeable, qualified, and this product for Professional Use Only at the time of purchase. Therefore, The Lash Supply also reserves itself the right to refuse a customer if it has grounds to believe that they are not a qualified professional.

NO DOUBT, NO WORRY!

100% money back guarantee for customers that purchase directly from **The Lash Supply.com**

- Defective product
- Wrongly delivered product
- Within 15 days upon received
- Change of mind*

It will not cover:

- Manufacturer warranty products
- Shipping & transaction costs
- Tax, Customs, Export, Permit & License fees

Valid for items that are returned in it's original condition only (packaging, wrapping, no scratches and/or physical damage)

How?

Just drop an email to thelashsupplyusa@gmail.com

"Change of mind" returns will only be refunded 90% + \$55 for administration fee ()



						
Drying Time (seconds)	0.5 - 0.8	1	1 - 1.5	2 - 3	3 - 4	1 - 2
Lasting time (weeks)	up to 7	up to 6	up to 6	up to 3	up to 2	up to 6
Humidity	30 - 50%	40 - 60%	40 - 60%	50 - 70%	50 - 70%	70 - 75%
Color	Black	Black	Black	Black	Black	Transparent
Volume (ml)	5	5	5	5	5	5
Viscosity (consistency)						
Normal Humidity Area 41% - 69%	Exactly Drying Time What You want It's Fit With Your Technical	Exactly Drying Time What You want It's Fit With Your Technical	Exactly Drying Time What You want It's Fit With Your Technical	Exactly Drying Time What You want It's Fit With Your Technical	Exactly Drying Time What You want It's Fit With Your Technical	Exactly Drying Time What You want It's Fit With Your Technical
High Humidity Area 70% and up	If You using Tornado You need to Change a glue more slower Drying Time	If You using Flex You need to Change a glue more slower Drying Time	If You using Magic You need to Change a glue more slower Drying Time	If You using Junior You need to Change a glue more slower Drying Time	This is the Slowest Glue Drying Time	If You using Crystal You need to Change a glue more slower Drying Time
Low Humidity Area 40% and lower	This is the Fastest Glue Drying Time	If You using Flex You need to Change a glue more faster Drying Time	If You using Magic You need to Change a glue more faster Drying Time	If You using Junior You need to Change a glue more faster Drying Time	If You using Senorita You need to Change a glue more faster Drying Time	If You using Crystal You need to Change a glue more faster Drying Time

WWW.THELASHSUPPLY.COM | WE BEAT ALL COMPETITOR PRICING!

Eyelash Glue
Eyelash Strip
Tweezer
Eyelash Extension

SHOP >



VOLUME & CLASSIC TWEEZERS



- #1 ISOLATION
- #2 ISOLATION
- #3 VOLUME
- #4 PICKUP CLASSIC
- #5 PICKUP CLASSIC
- #6 VOLUME
- #7 MIRROR
- #8 ISOLATION PICKUP CLASSIC
- #10 MIRROR
- #14 CURL PICKUP CLASSIC
- #15 CURL PICKUP CLASSIC
- #16 PICKUP CLASSIC
- #17 VOLUME



THE LASH ARTIST'S CHOICE

Premium Quality

Faux Mink - Blackest Black - Stable Curl - No Kink



Volume Lash 0.03



Volume Lash 0.05



Volume Lash 0.07



CUSTOMIZED ORDER - PRIVATE LABEL

Each tray includes over 1600 lashes

More 15% Longer Lasting

Length: 8mm to 25mm

Curl: C, CC, D are available

Any Special Curl (J, B L,U) can be customize order

Volume Lash are available in 0.03, 0.05, 0.07 0.10

Classic Lash are available in 0.15, 0.20





Before



After



EASY FAN IN 1 SECOND



CLASSIC

A LONG TIME WORK



EASY FAN

FLEXIBLE USAGE & SOFT
MATTE BLACK



PRE MADE

SINGLE FANS





16 lines
4 MORE LINES
 than other brands
 More lashes in one row

FLAT LASH



CURL	C/D
THICKNESS	0.20mm
LENGTH	8-20mm
QUANTITY	16 Rows/Tray More than 25% Lashes Quantity

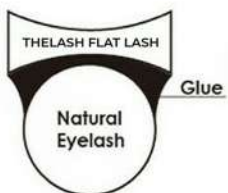
INCREASED BONDING AREA
 MAXIMISING LASH RETENTION

MATTE

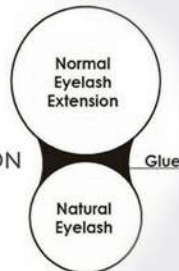


DEEPER SPLIT
DOUBLE UP
 THE VOLUME

SMALLER
 BONDING AREA



WIDER
 BONDING AREA
 BETTER RETENTION



INCREASED
 SURFACE AREA FOR GLUE

35% LONGER LASTING

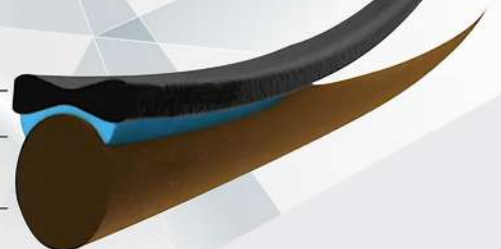


Flat Lash

Glue

Natural

lash



PREMADE FAN

1000 FAN

INDIVIDUAL LASH VS PREMADE FAN

3D 5D 6D 8D

THE LASH SUPPLY.COM **PREMADE FAN**

THE LASH SUPPLY.COM

DOUBLE the quantity at **HALF** the price

500 fans (Another Product) 4 cent/fan

1000 fans (The Lash Product) 2 cent/fan

SAME PRICE

www.THELASHSUPPLY.com

The Lash Supply **Other Brands**

Thin & Lightweight Base
Lasts up to **30% longer**

Thick & Heavy Base

All Premade Fan Boxes include 1000 fans.
Double The Quantity at Half The Price

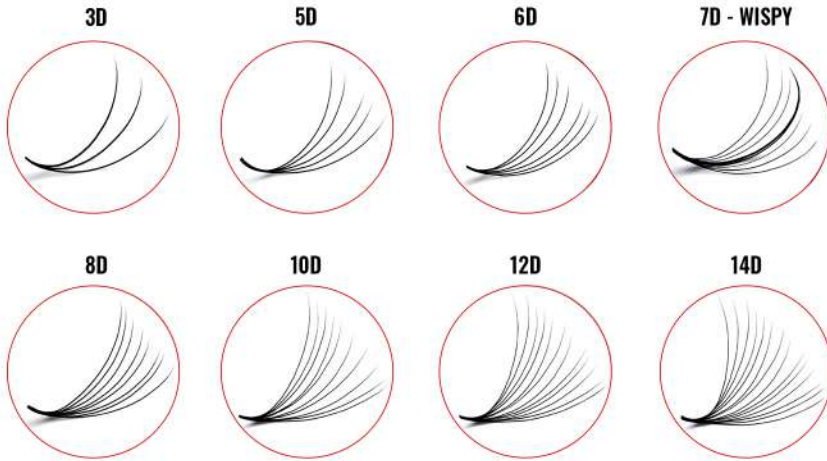
All premade fan boxes include **1000 FANS**
Double The **QUANTITY** at **HALF** The **PRICE**

OUTER BOX SIZE
Square/Rectangle
Packaging May Vary

THE LASH SUPPLY.COM **PREMADE FAN**



PREMADE FAN



BEST SELLER
 We have Wholesale Price
 for large order/bulk order
 (325)999.8999



COLOR LASH

New Collections



New Collection

COLOR LASH

HOTLINE: (325) 999-8999
THE LASH
SUPPLY.COM

This advertisement features a collection of Color Lash products. On the left, a pink flower is used as a backdrop for several fan-shaped lash trays in various colors including white, blue, green, and pink. To the right, a single white lash fan is shown. The text 'New Collection' is written in a cursive font at the top right. The brand name 'COLOR LASH' is prominently displayed in the bottom left, and contact information is provided in the bottom right.



New Collection
6D-CC-0.07

**COLOR
PREMADE
FAN**

This advertisement displays Color Premade Fan products. A central focus is a fan-shaped tray with multiple color options, including red, black, and white. To its left, a pink flower is partially visible. To the right, a single white lash fan is shown. The text 'New Collection' and the code '6D-CC-0.07' are at the top right. The product name 'COLOR PREMADE FAN' is in the bottom left, and the brand logo is at the bottom right.



New Collection

COLOR LASH

This advertisement shows a large variety of Color Lash products. Multiple fan-shaped trays are arranged in a semi-circle, showcasing a wide range of colors from bright reds and oranges to purples and blues. A pink flower is on the left, and a white lash fan is on the right. The text 'New Collection' is at the top right, and 'COLOR LASH' is at the bottom left.



THE LASH
SUPPLY.COM

EXCITING NEW
COLOR LASHES COLLECTION

@thelashsupplyofficial

This advertisement features a semi-circle of Color Lash trays in various colors. The background is white with blue circular patterns. The brand name 'THE LASH SUPPLY.COM' is at the top. Below the trays, the text 'EXCITING NEW COLOR LASHES COLLECTION' is written. At the bottom, the social media handle '@thelashsupplyofficial' is displayed in a white rounded rectangle. The bottom half of the image is a red gradient.



Nano Mister



IRRITATION FREE:

- Color Free
- Ethylene Oxide Free
- Betaine Free
- Paraben Free
- Alkyl Sulfate Free
- Polyquaternium Free
- Fragrance Free



**Foam Brush
Lash Foam**

Lash Storage 5-Trays



**Tweezer
Holder
-
Magnetic Case
of Tweezer**



Lash Tray



Before



After

- + Safety
- + Disinfectant
- + Easy to soak off



**Remover Glue
for Tweezers**

Glue Storage



**Foil
Glue**



Glue Stone



**Eyelash Glue Holder
Reusable**



Foam Tape

Sensitive Skin Medical Tape



Plastice Tape

Paper Tape



USB Fan

DISPOSABLE MICRO APPLICATORS

Economical and disposable, saving up to 80% by the reduction of excess materials used

Bends into any angle for the placement of small controlled amounts of material in limited access areas



Lip Brush



Mascara Wands
Mascara Wands inTube

MADE OF HIGH-QUALITY AND SAFE MATERIAL

BRISTLES ARE SOFT ENOUGH

Flexible head can be bend slightly for multi angle to brush eyelash

Brow Lamination

THE LASH
BROW LAMINATION

THE LASH
BROW LAMINATION
EYEBROWING KIT

NEW VERSION

THE LASH
BROW LAMINATION
EYEBROWING KIT

NEW VERSION

Practice Lash

Eyelash show

How to use

Head Mannequin

14CM

24.5CM

9.5CM

Headhand Magnifier Glasses

Mapping Pads

Eye Gel Pads

Lash Lift Kit

THE LASH
LASH LIFT

Instant Lift & Curl up to 6 weeks

Replacement Eyelid / Head Mannequin

Lash Tint Kit

Natural Black
Jet Black
Dark Brown
Medium Brown
Light Brown

Godfrey
TINTKIT
The Dark Beauty

Godfrey
Developer
Conditioner
Conditioner
Developer
Revelador
3% (10 Vol)

Big Silicone

Round Silicone

Lash Organizer



Pillow & Shelf



Glamcor Elite X Distributor



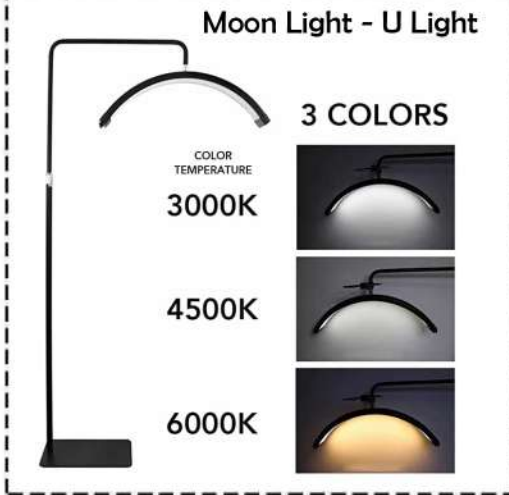
Waranty 1 year



LASH CLEANSER CONCENTRATE
Relaxes the senses
FREE OF PARABENS
PHTHALATES SULFATES & DYES



Ring Light 18inch & 21inch Remote Control Double USB Charging



Moon Light - U Light

3 COLORS

COLOR TEMPERATURE
3000K
4500K
6000K



DOUBLE ARM LIGHTS

\$220 now only \$139



Bag Organizer Accessories Case



Stool/ Chair



Lashes Bed

Cover Bed

183cm/72.05in
76cm/29.2in
76cm/29.2in

1. Practice Lash & Mapping Under Pads
2. Classic Lash 0.15 (Regular Lash)
Classic Lash 0.20 (Regular Lash)
3. Classic Lash 0.20 (Volume 0.07)
4. Mascara Wands
5. Lip Brushes
6. USB Fan
7. Lash Foam
8. Primer
9. Ultra Pro Glue
10. PE Tape / Paper Tape
11. Eye Gel Pad
12. Lash Board
13. Manequin Head
14. Classic Tweezer (Curl/ Straight)
15. Ring Glue
16. Cream Remover
17. Lash Bag Travel

EYELASH EXTENSION KIT
For beginner

TOTAL: \$250

NOW \$199

WE BEAT ALL COMPETITOR PRICING!
HOTLINE: 325-999-8999 | THELASHSUPPLY.COM



ECONOMY BEGINNER KIT

\$120

Now Only \$89

1. Mannequin Head : 1
2. Practice Lash : 1
3. PE Tape & Paper Tap : 2
4. Tweezers: 2 (Straight and Curl)
5. Junior Glue : 1
6. Lip Brushes: 100pcs
7. Mascara Wands: 100pcs
8. Glue Ring: 100pcs
9. Eye Gel Pads: 10 pcs
10. Single Lash board : 1
11. Gel remover : 1
12. Foil glue : 3 pieces
13. 5D 12 lines Mix C : 1 tray
14. Classic 0.15 Mix C : 1 tray



Wholesale Strip Lashes

THE LASH
SUPPLY.COM

	100 pairs	500 pairs	1000 pairs
Silk	\$1.4/pair	\$1.2/pair	\$1.0/pair
Silk 25mm	\$2.2/pair	\$1.8/pair	\$1.4/pair
Mink	\$3.5/pair	\$3.2/pair	\$3.0/pair
Mink 25mm	\$4.0/pair	\$3.6/pair	\$3.4/pair



Hotline
1-888-THELASH
+1-888-388-4352

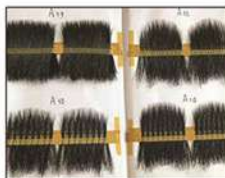
Packaging Box

Paper Box

\$2.00/box

Craft

Elaborate work, strict quality control



Warehouse

Large Stock, Quick Delivery



**CONTACT YOUR LOCAL STORES TO GET MORE INFORMATION
WHOLESALE / PRIVATE LABEL**

**Gel Remover
Cream Remover**



SUPPER BONDER
YOUR LASH GUARDER



Reduce the allergies



Water proof



Speed up the cure time of glue



Extend retention of eyelash extensions

Coating Sealant



Helps prolong the life of lash glues
Clear sealant for natural lash
Convenient mascara brush applicator

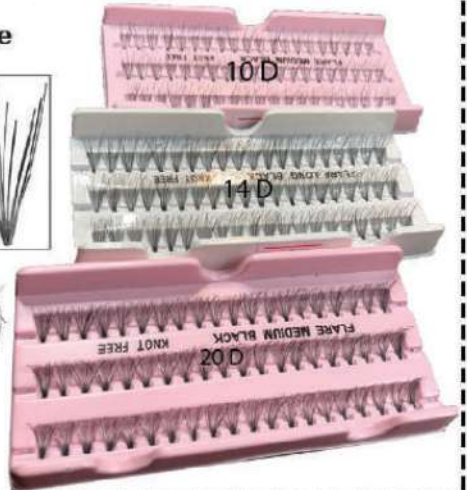
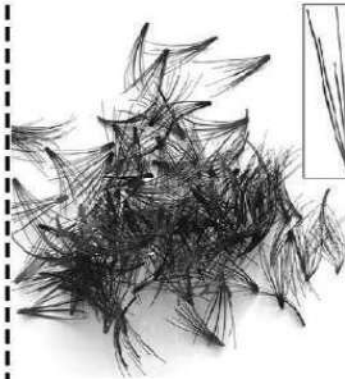


Bottom Lashes
Mixed Length Tray
5mm to 8mm

Primer



Flare - Knot/KnotFree



Glue Shaker



WHEN SHAKING GLUE, KEEP NOVELTY SEEBEST

POWER ON/OFF BUTTON

INSERT DISE, 30 FIB

SPIKES LASH



0.07

Easy to apply

- Top tip and Bottom width
- Strong Support
- Can match with kinds styles

For wispy / hybrid doing spikes / columns

Customer Shows



About Us

The Lash Supply is one of the top Eyelash Manufacturer in Vietnam and the Top Rated Eyelash Supply Store in the United States

Every product has been tested and approved by industry experts. Before we ever even think about putting a product on our shelf, it goes through an extensive trial program in our personal and partnered salons.

Why? We want to ensure that the products you use are the highest quality possible.

If the products you use are the best, you can be the best!

1-888-THELASH



+1-888-388-4352



THELASHSUPPLY STORE



HOUSTON

11548 Bellaire Blvd, Ste C, Houston, TX 77072 | 10311 North Eldridge Parkway, Houston 77065
10252 Almeda Genoa Rd, Ste D, Houston, TX 77065

ATLANTA
SAN ANTONIO
ARLINGTON

DALLAS
FALLS CHURCH
SAN DIEGO

LAS VEGAS
DAVIE
ORANGE COUNTY

CHICAGO
PHILADELPHIA
PHOENIX